

CLASS T 300 & 600 Volt Fuse Blocks

300 Volt, 100, 200, 400 & 600 Ampere Class T Fuse Blocks

Ampere Rating	Poles	Connector		Catalog No.	Fig.	Connector Torque In - lb	
		Type	Wire Range			Connector	Fuse Bolt
100 Phenolic Insulator	1	Box	Cu*	31001T	1	50	72
	2		31002T	2			
	3		31003T	3			
200 Phenolic Insulator	1	Box	Al/Cu	32031T	4	275	132
	3		350 kcmil-#6	32033T	5		
	1		Box	Cu*	32051T		
3	350 kcmil-#6	32053T		5			
400 Phenolic Insulator	1	Box	Al/Cu	34031T	6	600	228
	3		600 kcmil-#2	34033T	7		
	1		Box	Cu*	34051T		
3	600 kcmil-#2	34053T		7			
600 Phenolic Insulator	1	Box	Al/Cu	36031T	8	600	360
	1		Cu*	36051T	8		

† Note: Height includes nominal fuse blade thickness

Recommended base mounting screws:

100A & 200A, #10 (.190" dia.)

400A & 600A, 1/4" (.250" dia.)

Note: * Fuse blocks have copper box connectors and are for copper wires only. These are specifically designed with the same coefficient of expansion as copper wire for improved heat cycling and meet or exceed OEM "no aluminum" specifications.

Dimensions

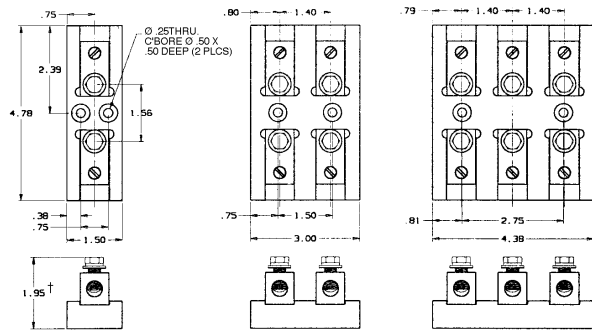


Figure 1

Figure 2

Figure 3

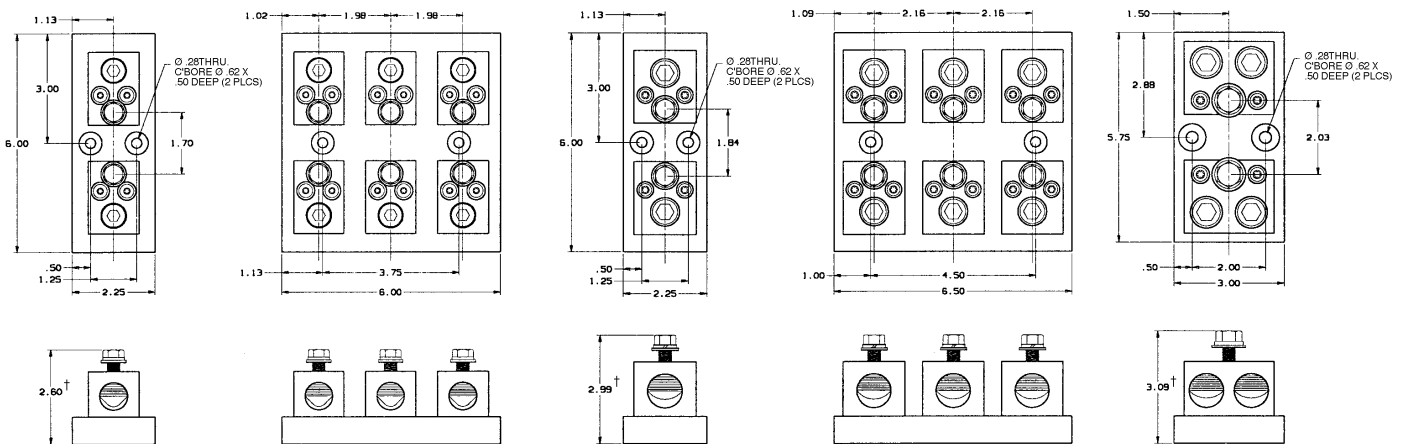


Figure 4

Figure 5

Figure 6

Figure 7

Figure 8